



POWER SHAPE₂

Introducing the NEW Innovation.
Integrated Triple Body Contouring System

Contents

- 1) **What is PowerShape2**
- 2) **Technology & Mode of Action**
 - RF
 - Low Level Laser
 - Vacuum Suction
- 3) **Component Overview**
 - Main Body
 - Hand-piece
 - Control Panel
- 4) **Clinical Indication & Case Results**
- 5) **Summary**
- 6) **Specification**

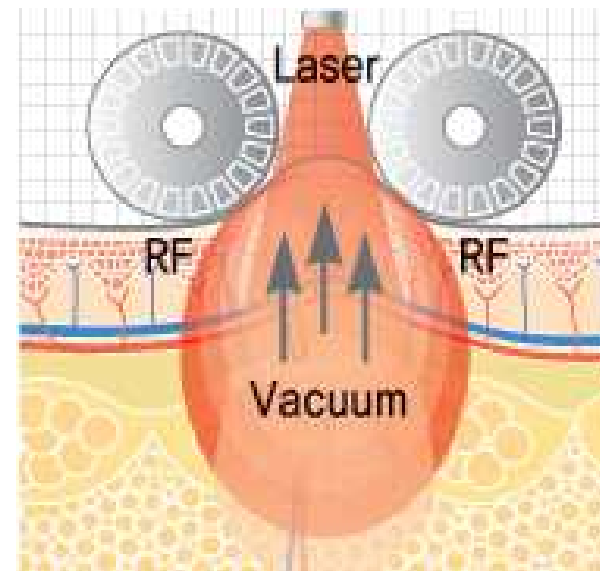
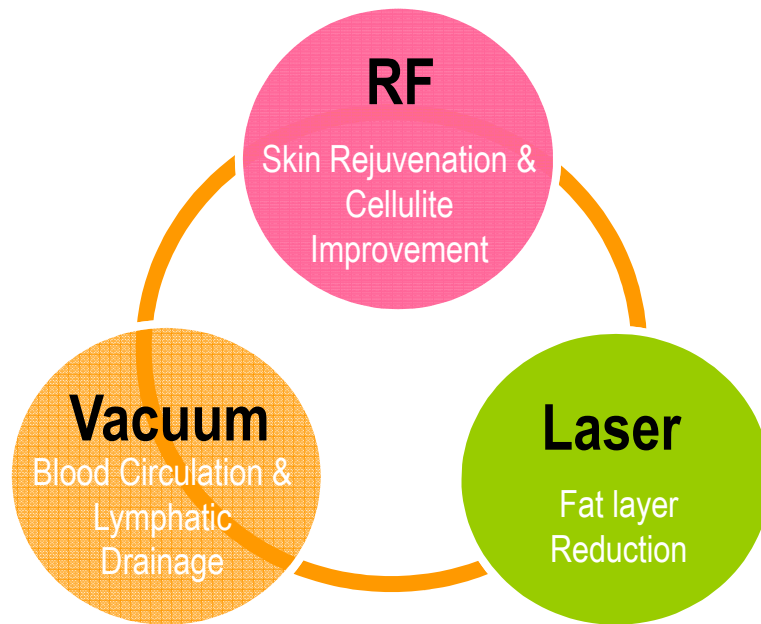
1. What is PowerShape2

Comfortable, Effective, Non-Invasive!

The new generation in body contouring & skin tightening treatments.

PowerShape2 offers multiple treatment applications equipped with industry's most coveted aesthetic technologies & desired aesthetic treatments.

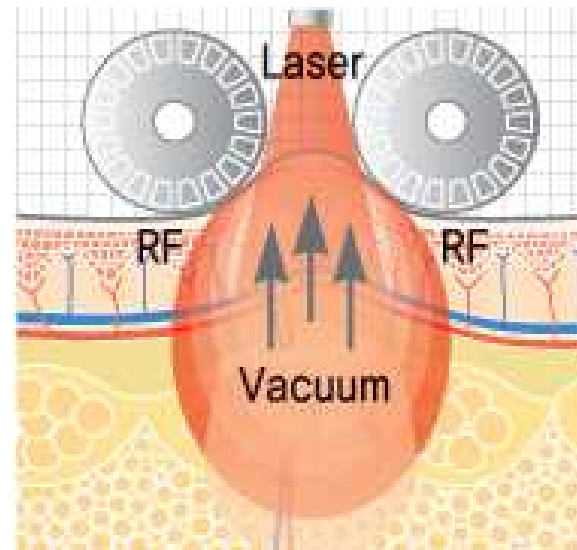
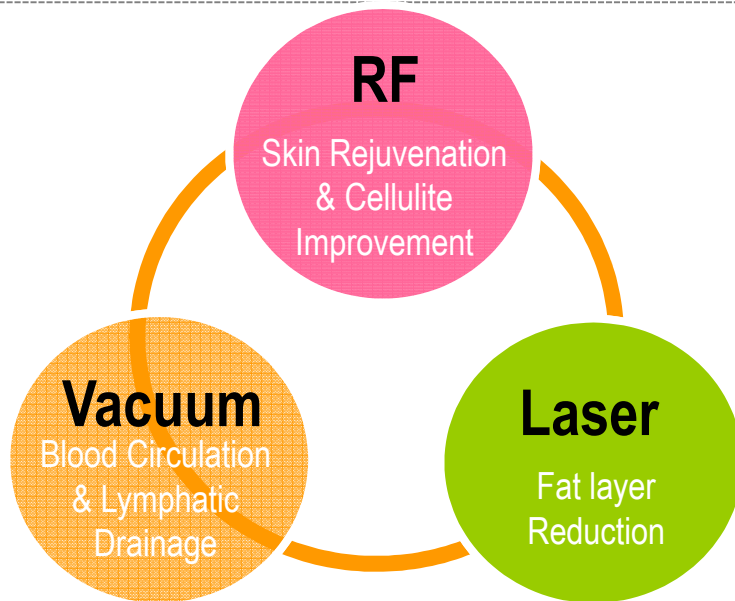
From simple improvements in problem areas to major full-body transformation, we can help you look your very best.



1. What is PowerShape2

PowerShape2 combines three different technologies including RF, Low Level Laser and Vacuum suction coupled with various dynamic pulses.

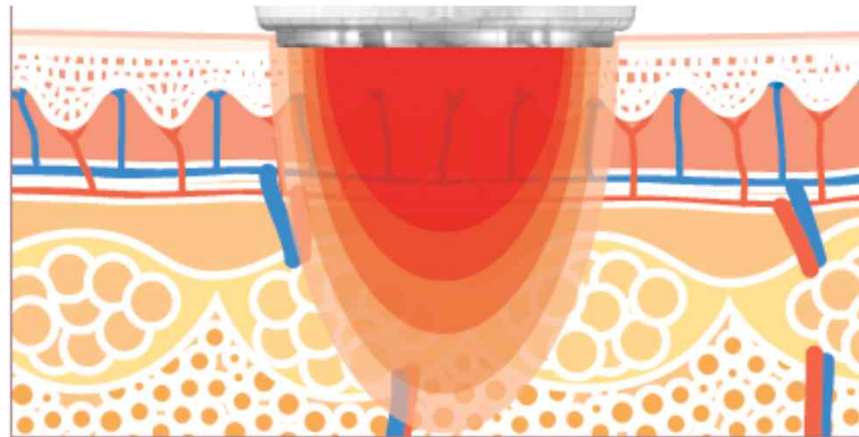
Combination of RF, and Low Level Laser creates deep thermal heating in the connective tissue including the fibrous septae. This promotes an increase in collagen depositing and cellular metabolism resulting in a noticeable localized reduction in skin laxity and volume. Concurrent function of vacuum suction generates an immediate increase in blood circulation and lymphatic drainage, both essential components for improving overall health.



2. Technology & Mode of Action

2.1. 2Mhz RF(Radiofrequency)

- PowerShape2 maintains a 2 MHz alternating current RF signal.
- As Radiofrequency(RF) energy meets impedance in the tissue, heat is generated. As the collagen-rich dermis is heated above 60° C, it immediately denatures, and **the fibrils contract and thicken**. In following subsequent inflammatory cascade in response to the initial heat, the cascade is thought to result in **new collagen formation** leaving the skin looking firmer, tighter and more youthful.

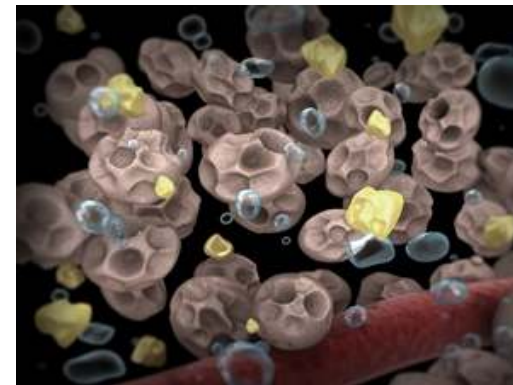
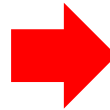


Reference: 1. Fitzpatrick R, Geronemus R, Goldberg D, et al: Multicenter study of noninvasive radiofrequency for periorbital tissue tightening. Lasers Surg Med 33:232-242, 2003

2. Technology & Mode of Action

2.2. 650nm Low Level Laser

- PowerShape2 irradiates 650nm wavelength of the low level laser.
- As the laser radiates into the fat tissue, photoexcitation of cytochrome- c-oxidase within hypertrophic adipocyte causes Ca^+ & H^+ . That helps to create **transitory pore within the adipocyte** & accelerate to **separate triglycerides into pieces**. Broken lipid easily release into the interstitial space and processed by the body's natural physiological and metabolic pathways.
- It is effective in **reducing overall body circumference measurements** of specifically treated regions, and also has shown to reduce the edema.

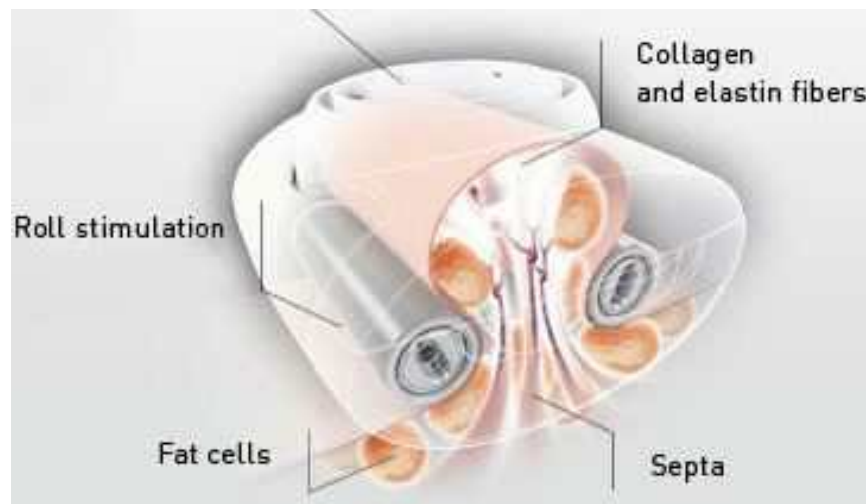


Reference: Body Shaping Treatments: A Comparison of Laser Lipolysis, Non Invasive Low Level Laser Therapy and Ultrasound Method by Dr. Freeman M Sc. PhD. 12th of May 2011

2. Technology & Mode of Action

2.3. Vacuum Suction

- PowerShape2 boasts off its vacuum-assisted technology coupled with various dynamic pulses.
- Vacuum lifts, folds and compresses the skin to increase local blood circulation & stimulates lymphatic drainage.
- Facilitates fibroblast activity & promotes vasodilation and diffuses oxygen.
- Enables precise delivery of energy.



3. Component Overview

3.1. Main Body



Control Panel:

- Intuitive LCD touchscreen interface with computerized presets facilitates treatment for both beginner and experienced users.

3 different kinds, total 6 pieces of optional handpieces:

- Roll Handpiece for body
- Multi-Polar Handpiece for body & face
- Thermal Handpiece for body & face

Drawer:

- Comfortably store the various handpieces at one place.

Air Filter:

- Easily dispose of used oil to keep the machine clean.

3. Component Overview

3.2. Body Handpiece



Roll Handpiece



Multi-Polar Handpiece



2



- Large -

3



- Medium -

3.3. Face Handpiece



Thermal Handpiece



4



- Large -

5



- Small -

Multi-Polar Handpiece

6




- Small -

3. Component Overview

3.4. Roll Handpiece



Feature & Advantage

- For Body Contouring & Cellulite Improvement.
- Bipolar vacuum-assisted motorized roll handpiece enables both Laser & RF energy precisely targeted where it can have maximum effect.
- Easy to operate.
- 4 kinds of dynamic pulses. 

Technology

- 2MHz Bi-Polar Radiofrequency
- Max. 700mmHg Vacuum Suction
- 650nm Low Level Laser Treatment

Treatment Area


- Back, Abdominal, Thigh

3. Component Overview

3.5 Multi-Polar Handpiece for Body



Feature & Advantage

- For Body Slimming & Muscle Relaxation
- Employing 4 and more electrodes to deliver current to skin tissue. This vacuum-assisted multi-polar handpiece for body is able to simultaneously heat superficial and deep skin layers by delivering a focused yet even current to the skin.
- Easy to operate.
- 4 kinds of dynamic pulses 

Technology

- 2MHz Multi-Polar Radiofrequency
- Max. 700mmHg Vacuum Suction
- 650nm Low Level Laser Treatment

Treatment Area

- Back, Abdomen, Thigh, Calves

3. Component Overview

3.6. Multi-Polar Handpiece for Face



Feature & Advantage

- For Lymph Drainage & Face Firming
- Employing 4 electrodes to deliver current to skin tissue. This vacuum-assisted multi-polar handpiece for face is able to simultaneously heat superficial and deep skin layers by delivering a focused yet even current to the skin.
- Easy to operate.
- 4 kinds of dynamic pulses



Technology

- 2MHz Multi-Polar Radiofrequency
- Max. 700mmHg Vacuum Suction
- LED (Red)

Treatment Area

- Forehead, Cheek, Jawline, Neck

3. Component Overview

3.7. Thermal Handpiece



Feature & Advantage

- For Face Lifting
- Increased thermal energy conductivity that treatment time is reduced thanks to the ceramic coated bi-polar tips.
- Ergonomically designed even to cover hard to reach & sensitive areas such as, periorbital & perioral area.
- Comes in 2 sizes.

Technology

- 2Mhz Bi-Polar Radiofrequency

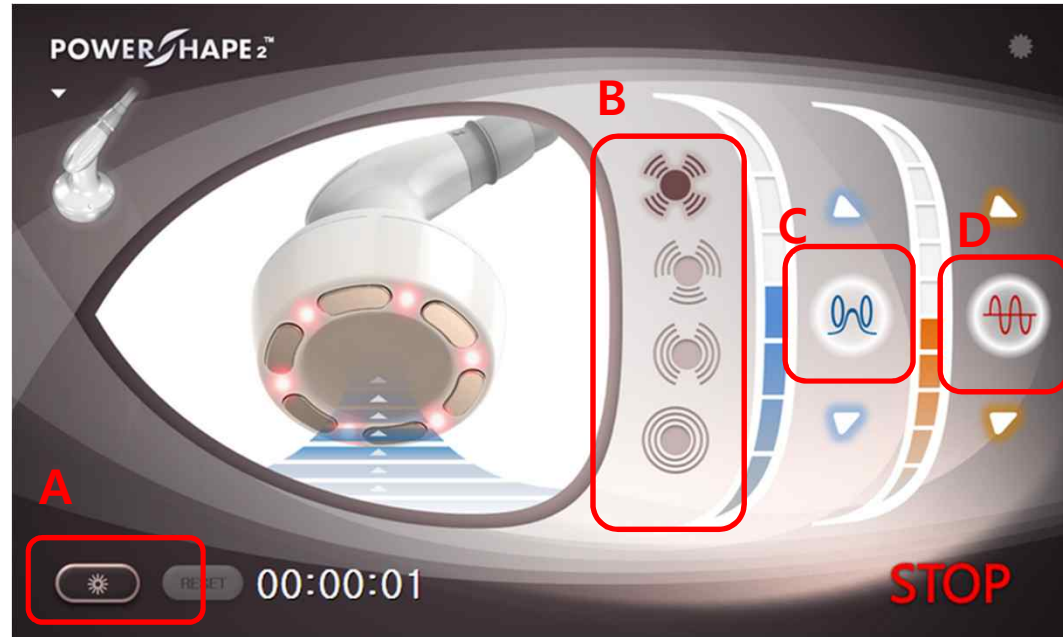
Treatment Area

- Large: Neck, Forehead, Cheek, Jaw
- Small: Periorbital, Perioral

3. Component Overview

3.8. Control Panel

- A Low Level Laser
- B Dynamic Pulses
- C Vacuum Level
- D RF Level



- Intuitive and user-friendly smart interface.
- High resolution color-touch screen with pre-set parameters provides safe, consistent, reliable and effective results

RF 10 Level, Vacuum Suction 7 Level, Pulse 4 Modes

4. Clinical Indication & Case Results

4.1. Clinical Indication

- Skin Tightening
- Cellulite Improvement
- Fat Cell Reduction
- Circumference Reduction
- Post Liposuction Treatment

Reference: 1. (RF to cellulite improvement & circumference reduction) Goldberg DJ, Fazeli A, Berlin AL: Clinical, laboratory, and MRI analysis of cellulite treatment with a unipolar radiofrequency device. Dermatol Surg 34:204-209, 2008

4. Clinical Indication & Case Results

4.2. Case Results

Proven Power, Remarkable Results

See the transformative power of PowerShape2 treatments for a wide range of body types. These various treatment settings gives your practice the power and flexibility to treat almost any patient with measurable, immediate & lasting results.

4. Clinical Indication & Case Results

Abdomen

* Female, Age 35



Before



4 treatments



After

6 treatments

4. Clinical Indication & Case Results

Thigh

* Female, Age 27



Before



3 Treatments



After

4 Treatments

4. Clinical Indication & Case Results

Back

* Female, Age 35



Before



3 Treatments



5 Treatments

5. Summary

PowerShape2 offers all of these Advantages & Benefits!

- Applies to a broad patient population, treating various body types and multiple body areas including facial areas.
- Versatility in treating all different areas of stubborn fat and/or sagging skin with one device.
- Comfortable simple and fast treatments guaranteed high level of patient satisfaction.
- Non invasive, Non surgical, No anesthesia are required. Virtually painless treatment.
- A non surgical procedure with little to no downtime.
- Helps reduce post-operative swelling by improving the blood circulation of the treated area.
- Easy to operate.
- No consumables means low cost of ownership. (except for thermal tip)

6. Specification



| | |
|--------------------------------|---|
| Type | <ul style="list-style-type: none"> ▪ Radiofrequency, ▪ Vacuum, ▪ Low Level Laser |
| Applicator | <ul style="list-style-type: none"> ▪ Roll Hand-piece ▪ Multi-Polar Hand-piece ▪ Thermal Hand-piece |
| Nominal Operating Power | <ul style="list-style-type: none"> ▪ AC 100~120V / 220~240V. ▪ 50/60 Hz |
| Pulse Duration | <ul style="list-style-type: none"> ▪ 4 Types of Dynamic Pulse |
| Output Frequency | <ul style="list-style-type: none"> ▪ 2MHz |
| Low Level Laser | <ul style="list-style-type: none"> ▪ 650 nm |
| Vacuum | <ul style="list-style-type: none"> ▪ 700mmHg |
| Control Panel | <ul style="list-style-type: none"> ▪ 10.2 inch, Digital Touch Screen |
| Dimension (WxDxH) | <ul style="list-style-type: none"> ▪ 413 x 572 x 1,250 (mm) |
| Weight | <ul style="list-style-type: none"> ▪ 60kg (net) |

Appendix – Treatment Protocol



Durations:

The average **PowerShape2** treatment time is about **30 minutes per body area**.



Experience:

During treatment, patients may feel minor discomfort, cold, prickling, tingling, or warmth but mostly would be described as mild. As a matter of fact, many patients feel comfortably relaxing while taking this treatment.



Regimen:

- Treatments are usually scheduled **2 sessions per a week**.
- Most patients would undergo a regimen of **6 to 8 total treatments** to acquire desired outcome.



Arm



Abdomen



Hip



Thigh



Calf

Appendix – What's improved to PowerShape1?

PowerShape2 is improved to PowerShape1 for followings:

| | |
|----|--|
| 1. | ▪ Improved high output power means faster thermal conductivity leads in faster treatment. (Increased energy density enables efficient heat of sub tissues) |
| 2. | ▪ Introducing 2 sizes of facial hand-pieces. Total 6 different kinds & sizes of the handpieces enable to treat various body types and areas. |
| 3. | ▪ Enlarged 10.2 inch of LCD touch screen. User-friendly smart interface. |
| 4. | ▪ Newly employed handpiece drawer for easy & convenient storage. |
| 5. | ▪ Hygienic management of ail filter attributed to easy disposal of used oil. |

Thank you

FOR FURTHER INFORMATION, PLEASE CONTACT US AT
es@esglobal.co.kr